

Conservation Card for Japan (10 * 10 km²)

2nd mesh code: 533946

Conservation rank

Multi-taxon priority rank

Nation-level: ★★★★★

Prefecture-level: ★

Per taxon priority ranking

Plant 5(1)	Mammal 5(1)	Bird 5(5)
Reptile 5(1)	Amphibian 1(1)	Freshwater Fish 5(5)

Biodiversity information

	Plant	Mammal	Bird	Reptile	Amphibian	Freshwater fish
No. of species	532	8	110	10	2	22
No. of endemics	76	3	1	6	1	6
No. of endangered species	20	1	15	2	0	5
Evolutionary distinctiveness	-4	-1	-2	0	1	0

Ecosystem services	Carbon stock	Land use type (km ²)	Paddy field	Risk factor	Temp change 1980-2019	Alien plant species
	297 t/ha		0		2 °C	494
	Crop wild relatives		Cropland or orchard	Typhoon change 1950-2018	Alien animal species	
9	0	59 %	13			
Useful plant species	Plantation forest	Population change 2015-2050				
214	0.01	4 %				

Nature protected areas (km²)

Strictness: very high	Wilderness conservation area	Special protection zone in natural parks	Forest ecosystem protection area		
	0	0	0		
Strictness: high	Special zone in natural parks	Special protection zone in wildlife sanctuary	Special protection zone in the nature conservation areas		
	0	0	0		
Strictness: normal	Natural park (ordinal zones)	Wildlife sanctuary	Forest reserve	Nature conservation area	Private forests targeted by regional forest planning
	0	3.59	0	0	0

Conservation Card for Japan (1 * 1 km²)

2nd mesh code: 533946

3rd mesh code: 21

Conservation rank

Multi-taxon priority rank




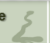


Nation-level: ★★★★★

Prefecture-level: ★★

Per taxon priority ranking

Plant	Mammal	Bird
4(1)	5(1)	5(4)
Reptile	Amphibian	Freshwater Fish
5(3)	2(2)	5(4)

Biodiversity information

	Plant 	Mammal 	Bird 	Reptile 	Amphibian 	Freshwater fish 
No. of species	560	9	99	12	2	24
No. of endemics	87	3	1	8	1	7
No. of endangered species						
Evolutionary distinctiveness	-3	-1	-2	-1	1	0

Ecosystem services	Carbon stock	100 t/ha	Paddy field	0	Temp change 1980-2019	1.5 °C	Alien plant species	515
	Crop wild relatives	9	Cropland or orchard	0	Typhoon change 1950-2018	59 %	Alien animal species	13
	Useful plant species	216	Plantation forest	0	Population change 2015-2050	19 %		

Nature protected areas (km²)

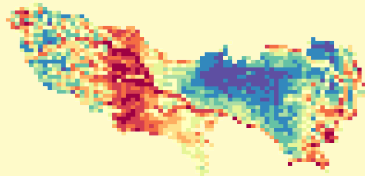
Strictness: very high	Wilderness conservation area	Special protection zone in natural parks	Forest ecosystem protection area		
	0	0	0		
Strictness: high	Special zone in natural parks	Special protection zone in wildlife sanctuary	Special protection zone in the nature conservation areas		
	0	0	0		
Strictness: normal	Natural park (ordinal zones)	Wildlife sanctuary	Forest reserve	Nature conservation area	Private forests targeted by regional forest planning
	0	0	0	0	0

Tokyo

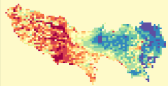


Priority rank in Prefecture

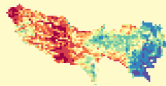
Multi-taxon



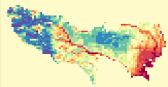
Plant



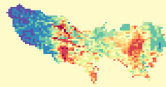
Mammal



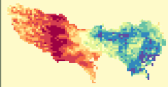
Bird



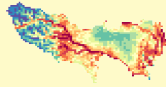
Reptile



Amphibian



Freshwater Fish

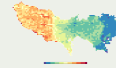


Biodiversity information

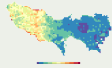
No. of species



Plant



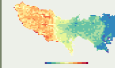
Mammal



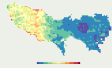
No. of endemics



Plant



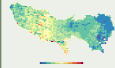
Mammal



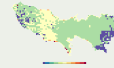
No. of endangered species



Plant



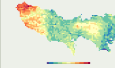
Mammal



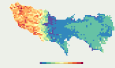
Evolutionary distinctiveness



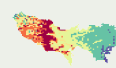
Plant



Mammal



Bird



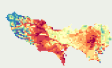
Reptile



Bird



Reptile



Bird



Reptile



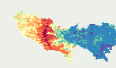
Bird



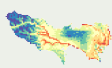
Reptile



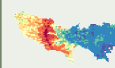
Amphibian



Freshwater Fish



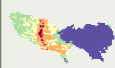
Amphibian



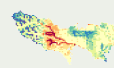
Freshwater Fish



Amphibian



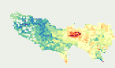
Freshwater Fish



Amphibian



Freshwater Fish

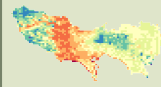


Ecosystem Service

Carbon stock



Crop wild relatives



Useful plant species

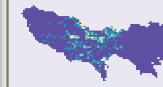


Landuse & Nature parks

Paddy field



Cropland & orchard



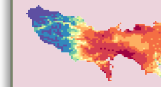
Plantation forest



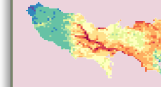
Nature park



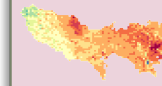
Alien plant species



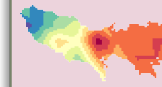
Alien animal species



Temp change



Typhoon change



Population change

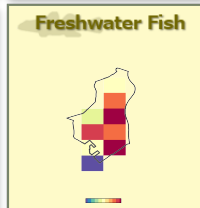
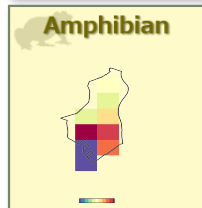
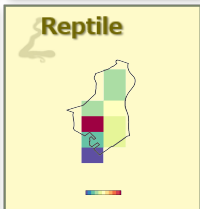
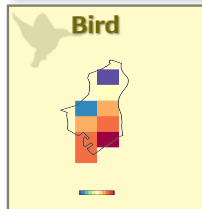
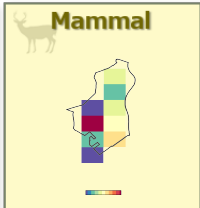
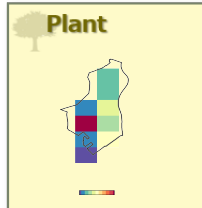


Risk factors

Tokyo Chuo

Priority rank in Prefecture

Multi-taxon



Biodiversity information

